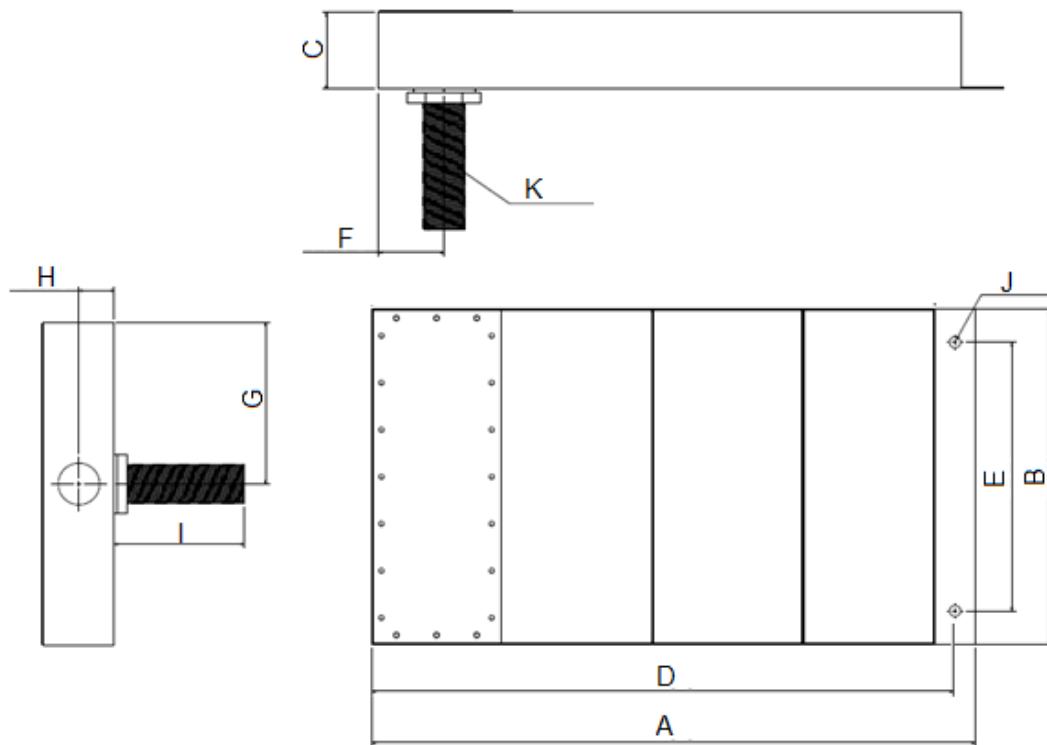


TECHNICAL SPECIFICATIONS

Nominal Voltages	:	95VAC / 125VDC
Nominal Currents	:	125 mA
Insulation Resistance	:	>100M Ω (Prior to fitting Surge suppressors)
DC Resistance	:	< 2 Ω
No. of Lines	:	2, 4, 6, 8 and 32Lines (upto 100 Lines)
Insertion Loss	:	60dB from 100 KHz to 300 KHz, 80dB from 500 KHz to 3GHz.
Type of Filtering	:	Low Power Filter with EMP Protection
HEMP Protection	:	MIL-STD-188-125 Unrestricted Lines of Intrasite, Short Pulse (E1)
Maximum Surge Current	:	6.5KA at 8/20 μ s
Maximum temperature rise	:	25 $^{\circ}$ C
Operating temperature range	:	-30 $^{\circ}$ C to +55 $^{\circ}$ C
Case material	:	MS with plating
Input Connection	:	MIL Circular Connector Female
Output Connection	:	Shielded cable through Threaded Pipe / Connectors



MECHANICAL DIMENSIONS



Filter Type	A	B	C	D	E	F	G	H	I	J	K
1 Pair / 2 Lines	450	80	55	435	50	47.5	40	27.5	100	4.2	M14
2 Pair / 4 Lines	450	125	55	435	85	47.5	62.5	27.5	100	6.2	M20
3 Pair / 6 Lines	450	180	55	435	130	47.5	90	27.5	100	6.2	M25
4 Pair / 8 Lines	450	250	55	435	200	47.5	125	27.5	100	8.2	M30
16 Pair / 32 Lines	450	250	220	435	200	47.5	125	110	100	8.2	M60

** Upto 100 Lines model is available

EMI Solutions Pvt. Ltd.

#237-A5, Bommasandra Industrial Area, Bangalore-560 099,
Marketing: +91 80 27836880, Email: marketing@emisindia.com

Total solutions to EMI

